

InfiMONITOR is a Network Monitoring System that enables service providers to monitor the status of InfiNet Wireless systems in their network from a network operations centre.

KEY PRODUCT FEATURES

Network Layouts:

- Links view
- Hosts view
- Alarm dashboard
- Event log
- Map view*
- Hierarchical view*

* Roadmap items

Graphing Features:

- Automatic creation of graphs for key parameters
- Unlimited history
- Analysis tools

Discovering:

- Hosts and links auto discovery using OS WANfLeX SNMP proxy functionality
- Automatic addition of discovered units

SYSTEM REQUIREMENTS

INSTALLATION PACKAGE

Virtual PC image with all software packages pre-installed.

SERVER

Minimal hardware requirements:

- ▶ CPU: 2.5 GHz, dual-core, VT-x/AMD-V x64 architecture
- ▶ RAM: 4 Gigabytes
- ▶ HDD: 40 Gigabytes free storage space

Software:

- ▶ VirtualBox virtualization hypervisor or VMWare virtualization hypervisor (VMWare Player, VMWare Workstation, VMWare ESX Server)

CLIENT

Minimal hardware requirements:

- ▶ CPU: 2 GHz x86
- ▶ RAM: 4 Gigabytes

Software:

- ▶ Web browser: Mozilla Firefox 11 or newer, Google Chrome, MS IE10 or newer

The screenshot shows the InfiMonitor web interface. At the top, there's a navigation bar with 'InfiNet wireless' logo and tabs for 'InfiMonitor', 'LogHistory', 'Dashboard', 'Graphs', and 'Settings'. Below the navigation bar, there's a search bar and a 'Logged in as admin (Logout)' indicator. The main content area is split into 'Links' and 'Hosts' views. The 'Hosts' view shows a table of hosts with columns: Name, Status, Since, Last Reboot, Last Reboot Reason, Model, Serial, Version, and Tags. Below the hosts table is a 'Log' window showing a list of events with columns: Timestamp, Object name, Object type, Message, Source, and Severity. On the right side, there are panels for 'Host General Properties' and 'Host Detailed Properties'.

LINKS VIEW FEATURES:

- ▶ **Links summary table**
 - Link status and last change time
 - Signal levels, bitrates, retries and errors percentage, traffic load
 - Flexible sorting and filtering
 - Color highlighting of unstable links
- ▶ **Log window**
- ▶ **Link properties**
 - Detailed link data updated online
- ▶ **Endpoint properties**
 - General information
 - Interface parameters
 - Interface counters
 - RF and MINT parameters

HOSTS VIEW FEATURES:

- ▶ **Hosts summary table**
 - Host status and last change time
 - Last reboot reason and time
 - Part number, serial number, software version
- ▶ **Log window**
- ▶ **Endpoint properties**
 - General parameters
 - Links
 - Interface parameters, counters and IP addresses

DISCOVERING:

- ▶ **Hosts and links auto discovery using OS WANFlex SNMP proxy functionality**
- ▶ **Automatic addition of discovered units**

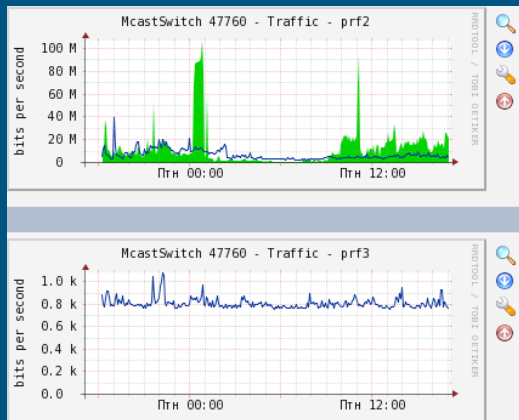
GRAPHING FEATURES:

- ▶ **Automatic creation of graphs for all interfaces and links**
- ▶ **Shortcut to graphs from link summary table**
- ▶ **Flexible and powerful Cacti graphing engine including:**
 - Unlimited history
 - Configurable views, zoom, etc.
 - Export to CSV

Links Summary Table

Endpoints	Type	Status	Since	Transmit Pow	Monitor Level	Current Level	Bitrate (MBit)	Retries (%)	Errors (%)	Load (kbps)	Load (pps)	Tags
Amirov-4.0 - JOIN	JOIN	up	2014.03.31 1	-/-	-/-	-/-	-/-	-/-	-/-	76/1669	95/175	
Amirov-4.0 - MINT	MINT	up	2014.03.31 1	18/23	31/33	12/6	54/117	0/7	0/0	1662/82	169/100	
Amirov-Koyr JOIN	JOIN	up	2014.03.25 1	-/-	-/-	-/-	-/-	-/-	-/-	8/7	9/5	
Amirov-Koyr MINT	MINT	down	2014.03.17 1	-/-	-/-	-/-	-/-	-/-	-/-	-/-	-/-	
Amirov-Koyr MINT	MINT	up	2014.03.26 1	19/12	54/48	21/21	45.5/45.5	0/0	0/0	9/13	4/8	
Amirov2 --- / PRF	PRF	up	2014.03.31 1	-/-	-/-	-/-	-/-	-/-	-/-	7/8	4/6	
Amirov2 --- / JOIN	JOIN	up	2014.03.31 1	-/-	-/-	-/-	-/-	-/-	-/-	14/16	8/14	
Aurora_BS - JOIN	JOIN	up	2014.03.26 1	-/-	-/-	-/-	-/-	-/-	-/-	5/6	2/6	
Aurora_BS - PRF	PRF	up	2014.03.26 1	-/-	-/-	-/-	-/-	-/-	-/-	0/3	1/2	
Aurora_BS - MINT	MINT	up	2014.03.31 1	23/23	27/26	14/13	180/180	0/0	0/0	14/11	14/9	
Aurora-Stas MINT	MINT	up	2014.03.26 1	23/23	40/38	16/15	117/117	0/0	0/0	8/10	4/5	
Aurora-Stas JOIN	JOIN	up	2014.03.26 1	-/-	-/-	-/-	-/-	-/-	-/-	3/7	2/4	
Aviator-Dom MINT	MINT	up	2014.03.31 1	15/15	37/41	14/17	58.5/58.5	0/0	0/0	263/439	123/118	
Aviator-Dom JOIN	JOIN	up	2014.03.31 1	-/-	-/-	-/-	-/-	-/-	-/-	379/271	143/149	
Aviator-H06 JOIN	JOIN	up	2014.03.31 1	-/-	-/-	-/-	-/-	-/-	-/-	3/4	1/4	
Aviator-H06- PRF	PRF	up	2014.03.31 1	-/-	-/-	-/-	-/-	-/-	-/-	7/51	0/5	
Aviator-N --- JOIN	JOIN	up	2014.03.31 1	-/-	-/-	-/-	-/-	-/-	-/-	280/583	153/168	
Aviator-N-PF PRF	PRF	up	2014.03.31 1	-/-	-/-	-/-	-/-	-/-	-/-	4/1	1/1	
Aviator-N-PF PRF	PRF	up	2014.03.31 1	-/-	-/-	-/-	-/-	-/-	-/-	289/401	153/149	
BD3_4.0 --- I JOIN	I JOIN	up	2014.03.31 1	-/-	-/-	-/-	-/-	-/-	-/-	3/3	3/3	
BD3_4.0 --- I JOIN	I JOIN	up	2014.03.31 1	-/-	-/-	-/-	-/-	-/-	-/-	1/3	1/3	
BD3_4.1 --- I JOIN	I JOIN	up	2014.03.31 1	-/-	-/-	-/-	-/-	-/-	-/-	1/3	1/3	

Graphs



Endpoint Properties

Parameter	Value
MAC Address	00:0E:8E:20:14:4D
IP Address 1	10.1.1.45
Admin Status	up
Operational Status	up
Rx Bytes	107495417
Tx Bytes	4193053307
Rx Packets	1099921500
Tx Packets	1244894675
Rx Errors	14340
Tx Errors	1956
Rx Load (pps)	333
Tx Load (pps)	510
Rx Load (kbps)	213
Tx Load (kbps)	2441
Noise Floor	-94 dBm
MINT Node Type	master
MINT Node Mode	fixed
MINT Links Count	3
Marker Access Status	on
MINT Roaming Status	leader
AutoBitrate	on
AutoBitrate Correction	-4
AutoBitrate Min Level	1
MINT Extra Cost	0

Link Properties

Parameter	Value
Type	MINT
Status	up
Since	2013.07.24 11:43:54
Endpoints	RD_BS124 --- RD_CPE125
Transmit Power (dBm)	18/18
Monitor Level (dB)	23/24
Current Level (dB)	12/13
Bitrate (MBit/s)	240/240
Retries (%)	5/12
Errors (%)	0/0
Load (kbps)	3/5
Load (pps)	3/3

Log Window

Timestamp	Object name	Object type	Message	Source	Severity
2014.04.11 17:35:55	INF-SHISH-PTP --- SHISH-INF-PTP	Link	Bitrate changed from 180 to 240 Mbps on N Trap		Info
2014.04.11 17:35:48	INF-SHISH-PTP --- SHISH-INF-PTP	Link	Bitrate changed from 240 to 180 Mbps on N Trap		Info
2014.04.11 17:35:43	INF-SHISH-PTP --- SHISH-INF-PTP	Link	Bitrate changed from 180 to 240 Mbps on N Trap		Info
2014.04.11 17:35:38	INF-SHISH-PTP --- SHISH-INF-PTP	Link	Bitrate changed from 240 to 180 Mbps on N Trap		Info
2014.04.11 17:35:37	INF-SHISH-PTP --- SHISH-INF-PTP	Link	Bitrate changed from 180 to 240 Mbps on N Trap		Info
2014.04.11 17:35:33	INF-SHISH-PTP --- SHISH-INF-PTP	Link	Bitrate changed from 240 to 180 Mbps on N Trap		Info

Log History & Settings:

History view

- Flexible sorting and filtering

Filters settings

- Severity assignment (emergency, critical, alert, error, warning, notice, info, debug, drop)
- Conditions selection (date, time, object name, object type, source, message, parameter, current value, previous value, tags)

Alerts settings

- Conditions selection (date, time, object name, object type, source, message, parameter, current value, previous value, severity, tags)
- Actions assignment

Actions settings

- (send SMS, send E-mail, run command or execute script, send SNMP trap, create task on dashboard)

Alarm dashboard

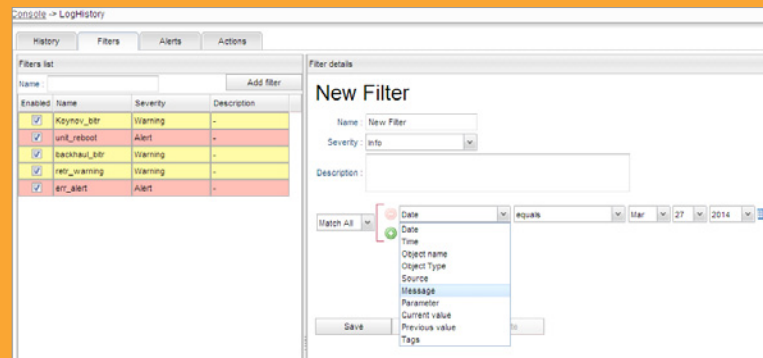
Tracker features

- (filtering by priority, by alert, by status, by object name, by message)

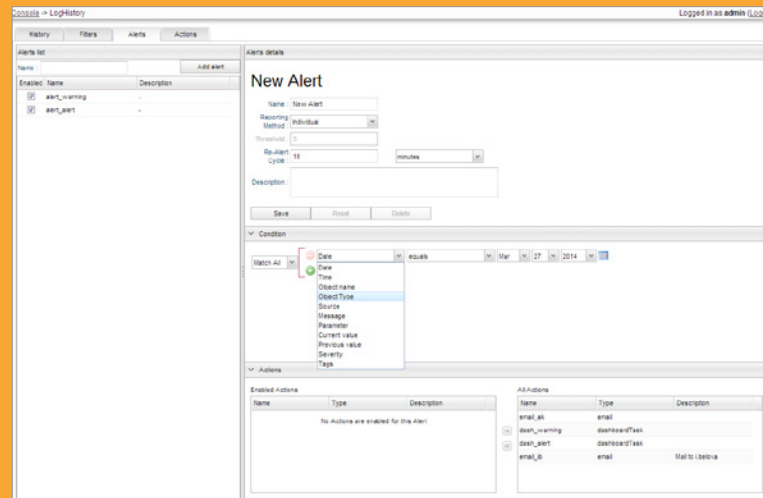
History view

- Flexible sorting and filtering

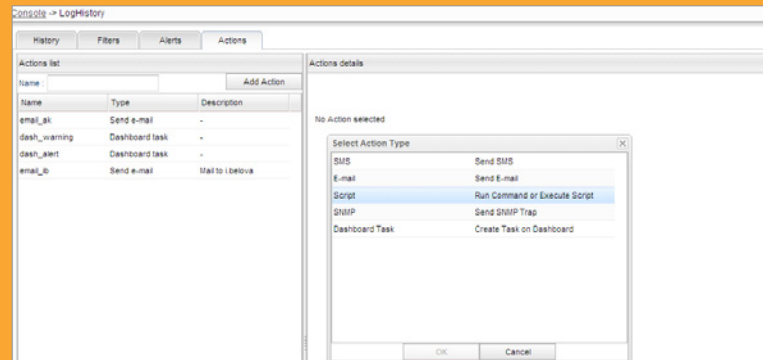
Filters settings



Alerts settings



Actions settings



Alarm dashboard

