

# Mythware V2.6 Classroom Management



Optimized to provide a friendly, collaborative classroom solution, Mythware Classroom Management Software has made teaching and learning in an interactive style as our mission. With enhanced performance and availability in a wide range of languages, Classroom Management is the first choice for educators worldwide.

Designed with friendly and easy-operate interface, Classroom Management by Mythware will be easily integrated. It is also equipped with high level of compatibility and stability, which ensures the ability to work with other software and enables long teaching process. And it performs well both in wired and wireless environment.

Serving as a management platform for multimedia interactive teaching in computer classrooms, this classroom management software enables the teacher to control and manage the class effectively, supervise students' activities and maintain a good order in class, and students can learn, communicate and collaborate with each other and between groups.

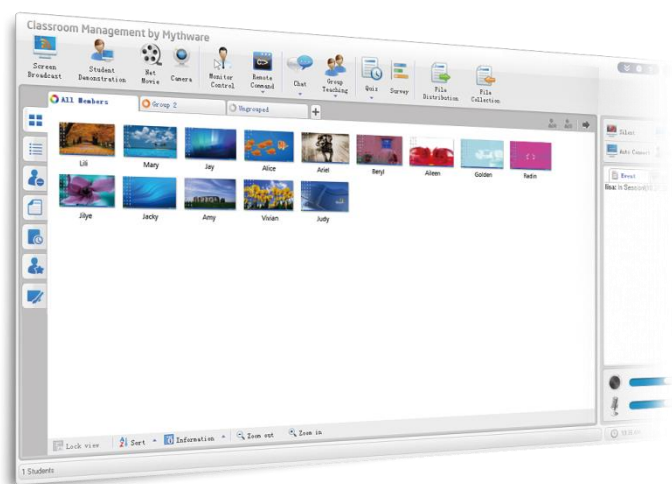
## Key Features

- ⊙ Screen Broadcast
- ⊙ Student Demonstration
- ⊙ Net Movie
- ⊙ Camera Broadcast
- ⊙ Group Management
- ⊙ Group/Topic Chat
- ⊙ Group Teaching
- ⊙ Interactive Whiteboard NEW
- ⊙ Response & Competition NEW
- ⊙ Monitor & Control
- ⊙ Student Sign-in Update
- ⊙ Remote Command Update
- ⊙ Remote Setting Update
- ⊙ Quiz/Survey
- ⊙ Quiz by Answer Sheet Update
- ⊙ File Distribution
- ⊙ File Collection/Submission
- ⊙ Web/Application Policy
- ⊙ USB/CD/Printer Control
- ⊙ Message/Event
- ⊙ Silent On/Off
- ⊙ Thumbnail View
- ⊙ Automatic Connection

## 19 Languages Available



# Benefits of Classroom Management



“Classroom Management has a range of features to support effective teaching and learning, it enables interactivity and collaborative work, providing tools to organize class and assess learning outcomes.”

## Interactive Teaching & Learning

Classroom Management provides teachers with powerful functions to conduct teaching and facilitate teacher-student interaction. Classroom Management is designed for 1:1 eLearning. With Mythware Classroom Management, teachers can accomplish the teaching objectives as students are better focused in class.

## Effective Control & Assistance

Classroom Management provides teachers with efficient tools to control the class and manage student work efficiently and effectively. The software allows teacher to view student screens and provide assistance remotely. The software also enhances communication between teachers and students.

## Group Collaboration

With Classroom Management, teachers can divide students into groups and facilitate group collaboration. Assigned group leaders can be granted with higher authorities. For instance, they may be authorized to share their screens and files with the other group members. To enhance collaboration, teachers can also join in groups to guide students.

## Assessment

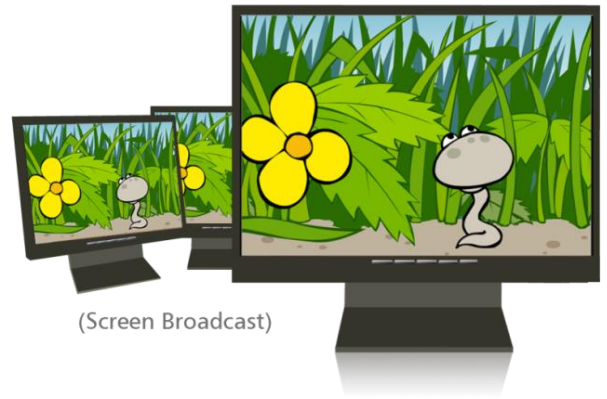
Classroom Management has a set of practical features that allow teachers to assess students' learning outcome by quiz. Teachers can also conduct a survey which is comprised of a single question. Individual learning outcome can hence be assessed easily and instantly.



# Interactive Teaching & Learning

## High-speed Screen Broadcast

- Broadcast the screen and voice from the teacher's side to students promptly.
- Record the screen and voice of the teacher for after-class review.



## Student Demonstration

- Display one student's screen to the teacher and other students.

## Camera

- Use the camera of teacher to broadcast the images to students.
- Connect to capture box or capture dongle to broadcast the image it captures.



## Net Movie

- Play media files on teacher side and broadcast it to the selected students.

## Interactive Whiteboard

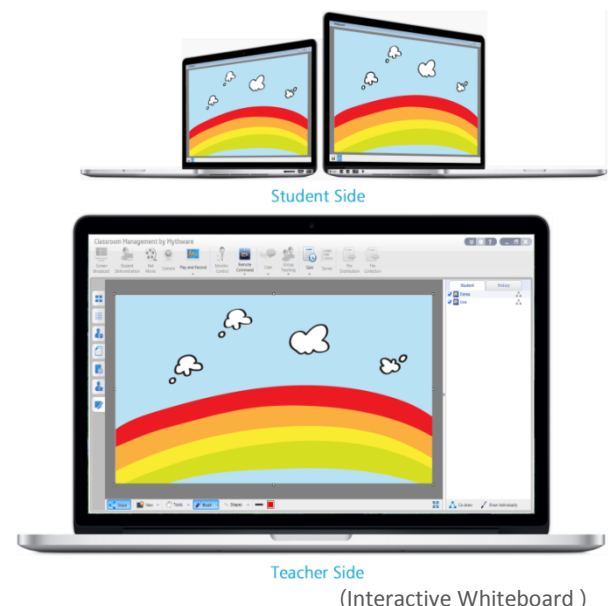
- Share the drawing board with students and invite them to draw together.
- Ask students to draw on their own drawing boards and monitor them.
- Select one student to demonstrate his drawing to other students.

## Multiple Voice Interaction

- Broadcast the teacher's voice to the selected students.
- Communicate with the selected student by voice during class.
- Monitor the voice of students easily and clearly.

## Message

- Teachers and students can send messages to each other to enhance communication.



# Effective Control & Assistance

## Response & Competition

- Start a competition by individuals or groups.
- Use an award system to assess the performance of students.



(Response & Competition)

## Student Policy

- Set different policies on the use of web, application, USB, CD and printer of students.

## Remote Command

- Startup, reboot and shut down student PCs by one click from teacher.
- Launch the application of students with different operation systems, and close the applications remotely.
- Open the website of student remotely or locally.
- Help students log in the Windows remotely.

## File Distribution

- Distribute files to the specified folder of students.

## File Collection

- Collect files from students' computers at any time.
- Enable or disable students to send files during class.

## Monitor & Control

- Monitor the screens of students in a single view and assist them remotely.

## Silence

- Display customized messages on student PCs, mute their sound devices, and block their input devices to get attention.

## Student Sign-in

- Correspond students' names with their seat numbers by asking them to enter the required information.
- Compare sign-in list with name list to obtain attendance.

## Login Mode Management

- Students choose teacher to log in.
- Students automatically connect to the teacher in the same channel.

## Remote Settings

- Separately set properties to students with different operation systems.
- Set common properties like Display, Theme and so on of students remotely.



(Remote Setting)

# Group Collaboration

## Group Teaching

- Teachers can create groups and assign one student member of each group as group leader.
- Grant group leaders with authorities to manage their group work



## Group Chat

- Teacher and students can exchange information by sending message, drawing and talking within the group.

## Topic Chat

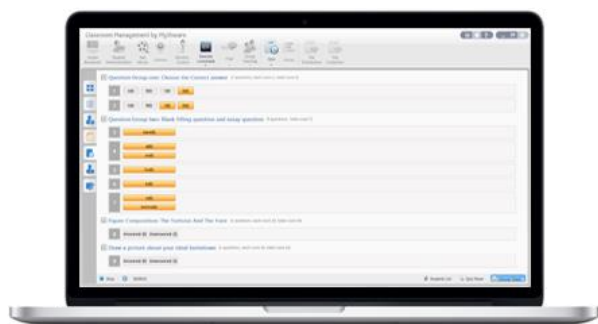
- Teachers can create different topics and students select which topic to join in.



# Assessment



Student Side



Teacher Side (Quiz by Answer Sheet)

## Standard Quiz

- Arrange a quiz with four different question types before or during class.
- Distribute the quiz paper and start the quiz instantly.
- Obtain the score of each student after collecting all the quiz papers and send results to the students automatically.

## Quiz by Answer Sheet

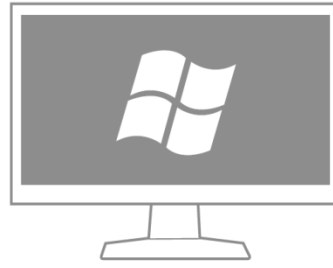
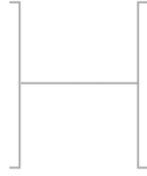
- Import documents as quiz papers and edit on it to generate answer sheet.
- Conduct a quiz by quick or customized answer sheet.
- Share the answer sheet with other windows or android teachers.
- Grade quiz results and export the results in the form of HTML or XML.
- Students answer the question on the paper directly.

## Survey

- An instant quiz with only one question to check learning outcome of students promptly.
- Get the results immediately after time ends.



Teacher Side



Student Side



## Windows Teacher + Windows Students

This solution is suitable for instructors who want to teach with Windows laptops, and students with Windows laptop or tablet. This combination will make sure your class is smooth, stable and gleeful.

## System Requirements



### Teacher Side



### Student Side

Operating System

Windows XP/SP1/SP2/SP3, Server 2003/SP1/SP2, Vista/SP1/SP2, Server 2008, Win 7/SP1/x64, Win 8/x32/x64, Win 8.1/x32/x64

Hardware Requirements

- **Minimum Requirements**  
CPU P4 2.8G, 1Gbytes Memory, 128Mbytes Display Card
- **Recommended Requirements**  
CPU Core 2 E6300, 2Gbytes Memory, 256Mbytes Display Card

- **Minimum Requirements**  
CPU Celeron 1G, 512Mbytes Memory, 128Mbytes Display Card
- **Recommended Requirements**  
CPU Core 2 E4300, 1Gbytes Memory, 128Mbytes Display Card

Network Requirements

- **Wired Network**  
10Mbytes/100Mbytes/1000Mbytes Shared Network or Switched Network
- **Wireless Network**  
802.11b/g/n wireless network.

## License

License Model

- Per Class:** Registration on teacher's computer only.
- Per Seat:** Registration on both teacher's and student's computer.
- Per School:** Registration on the computer which is used as the server.

Nanjing Universal Networks Co., Ltd. reserves the right to revise this document and to make changes from time to time in the content here of without obligation to notify any person or persons of such revisions or changes. Information in this document is subject to change without notice.

Tel: +86-25-66987979  
Web: [www.mythware.com](http://www.mythware.com)  
Email: [sales@mythware.com](mailto:sales@mythware.com)